

ESPEN Collect

Advancing NTD Digitalization in
Mapping, Impact, Surveillance and
Coverage Surveys

Date

Name

ESPEN

UHC/UCN

Universal Health Coverage/Communicable
and Noncommunicable Diseases



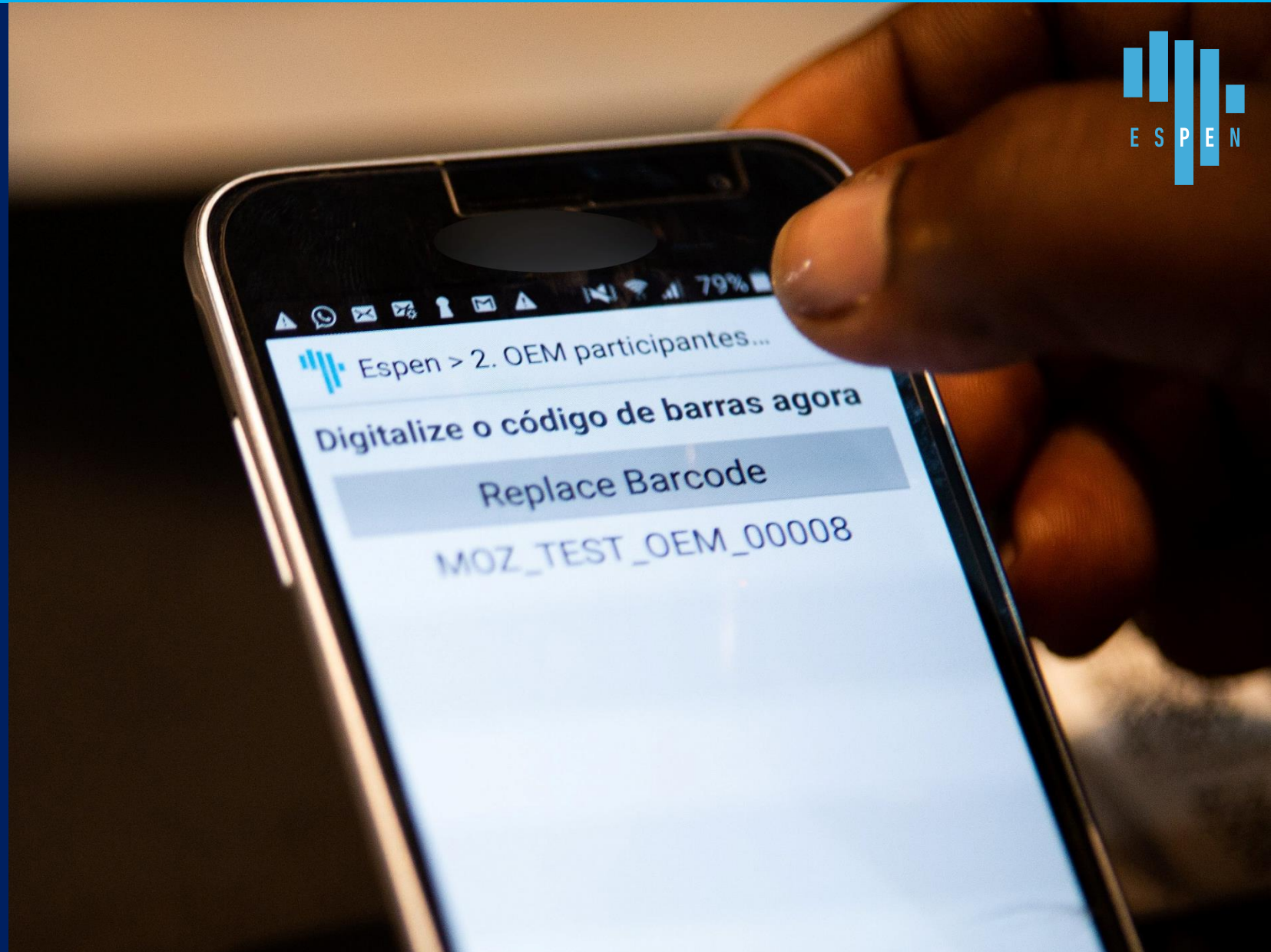


What is ESPEN Collect ?

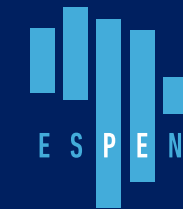
Experiences: Coverage Survey in South Sudan and Burkina Faso

Future Enhancements and Services

What is ESPEN Collect ?



What is ESPEN Collect ?



Overview:

ESPEN Collect stands as a dedicated ally for NTD Program Managers, specifically designed to fortify the implementation of epidemiological surveys. Focusing LF, Onchocerciasis, Schistosomiasis, and Soil-Transmitted Helminthiasis, ESPEN Collect offers support across all survey stages.

Stages of ESPEN Collect's survey support services:

1. Pre-Survey

- Ethical clearance review
- Survey protocol development with senior scientist input

2. Survey

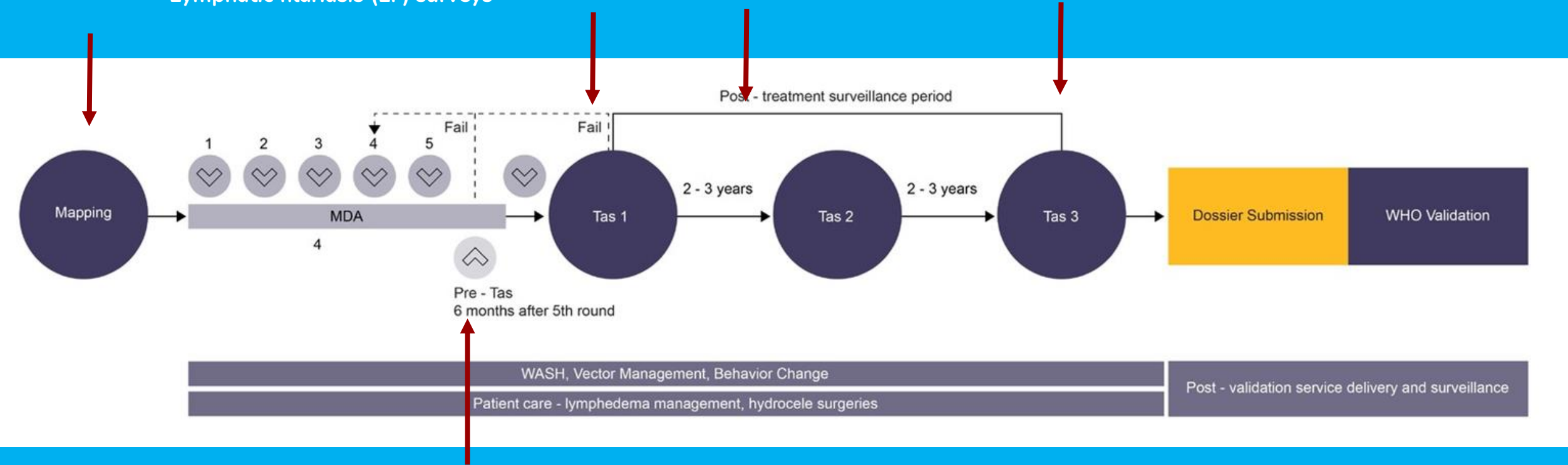
- Training assistance and equipment provision
- Electronic survey software with cloud-based dashboard for real-time data review
- Dashboard highlighting progress and challenges for survey supervisors

3. Post-Survey

- Survey results presented in pre-filled Epidemiological Reporting Form (EPIRF)

When are surveys needed?

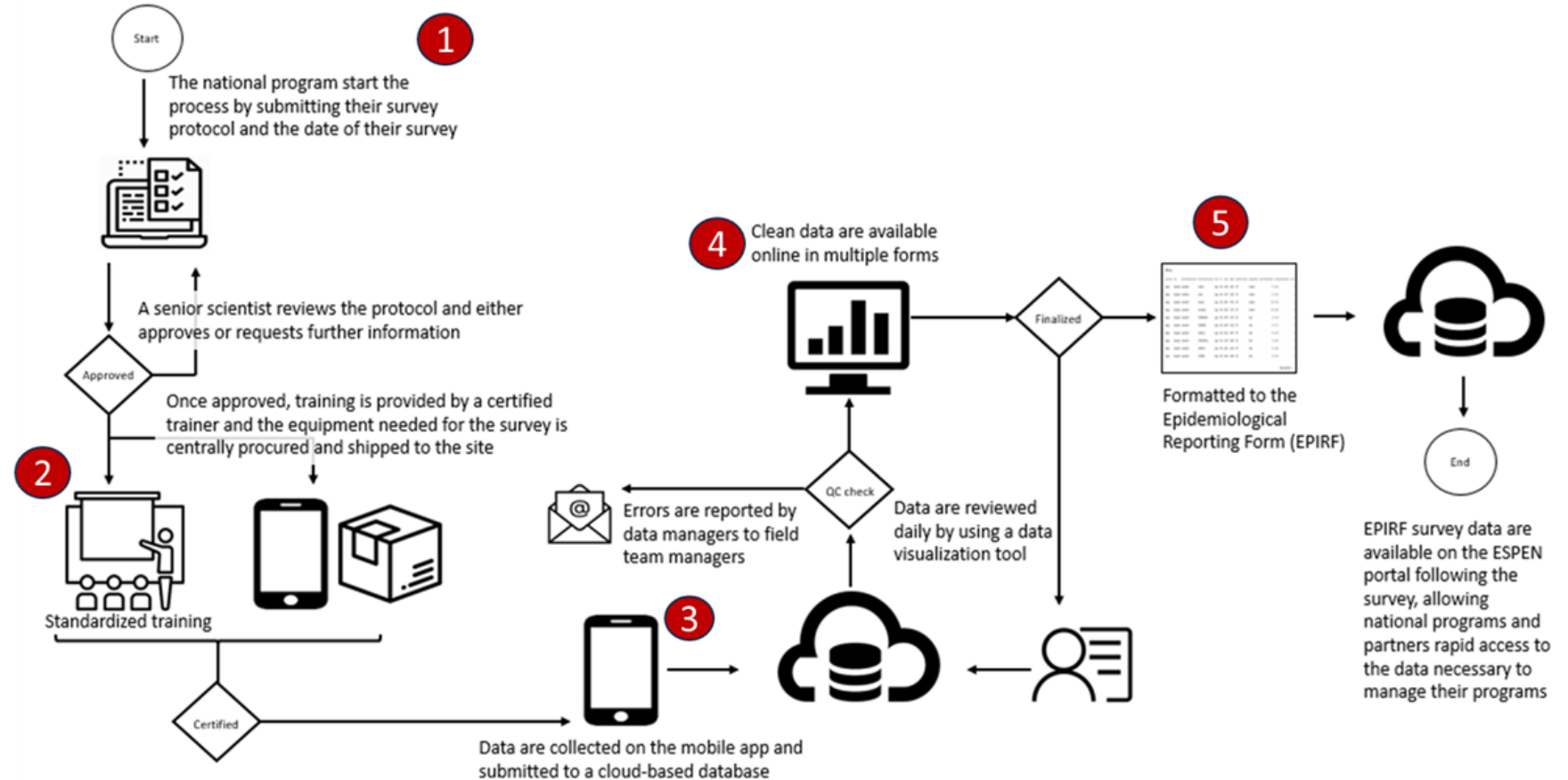
Lymphatic filariasis (LF) surveys



How does ESPEN Collect work?

There are **five main components** of the ESPEN Collect survey support services:

- 1 Registration
- 2 Training
- 3 Data collection
- 4 Online dashboard for quality control
- 5 Generation of the EPIRF



Where has ESPEN Collect been used from 2018 to 2023?

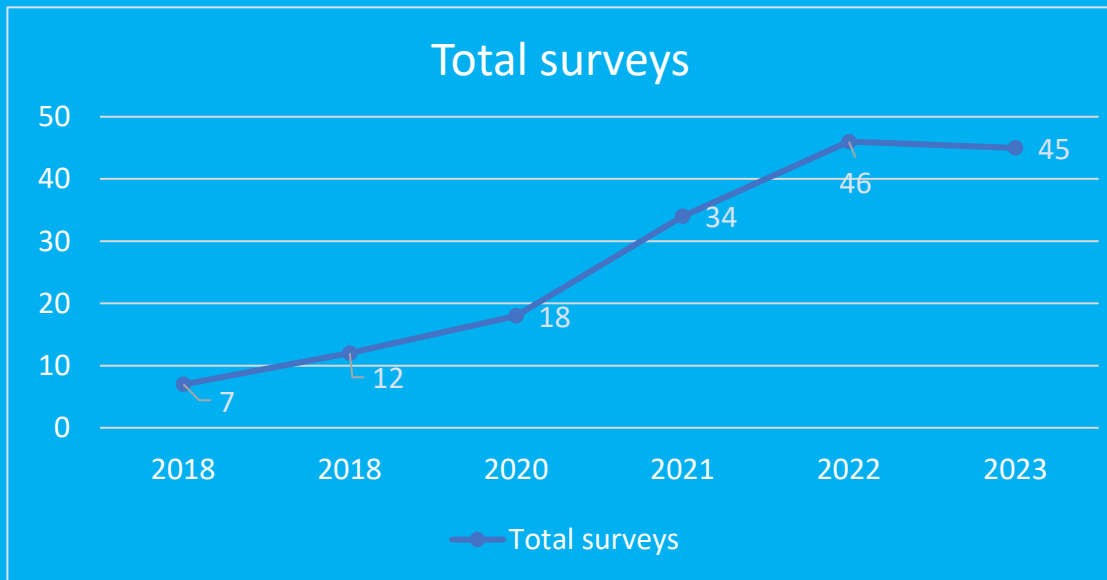


162 surveys

32 countries

+2000 peoples trained

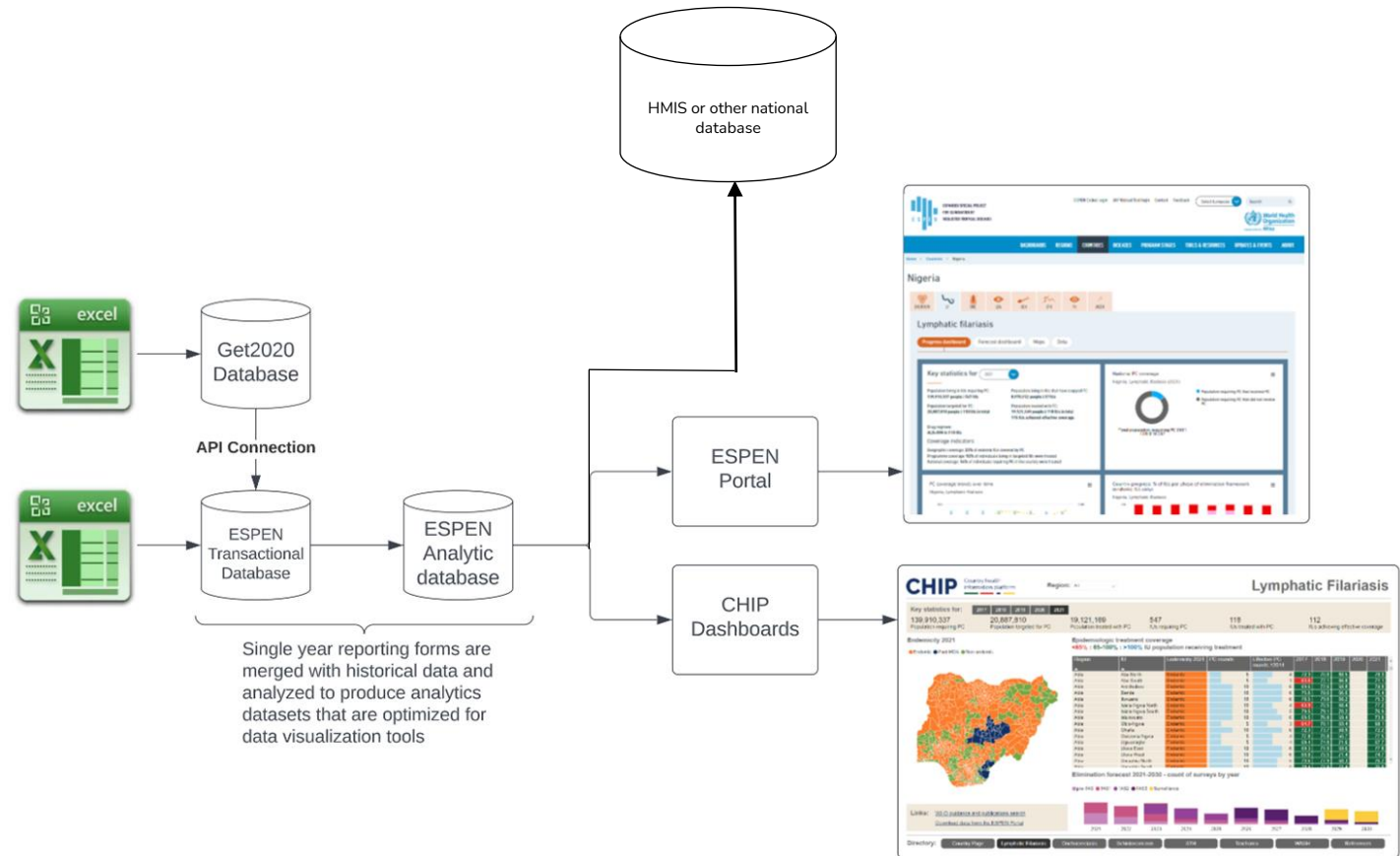
Lymphatic Filariasis	SCHISTO / STH	ONCHO
71 surveys	21 surveys	70 surveys



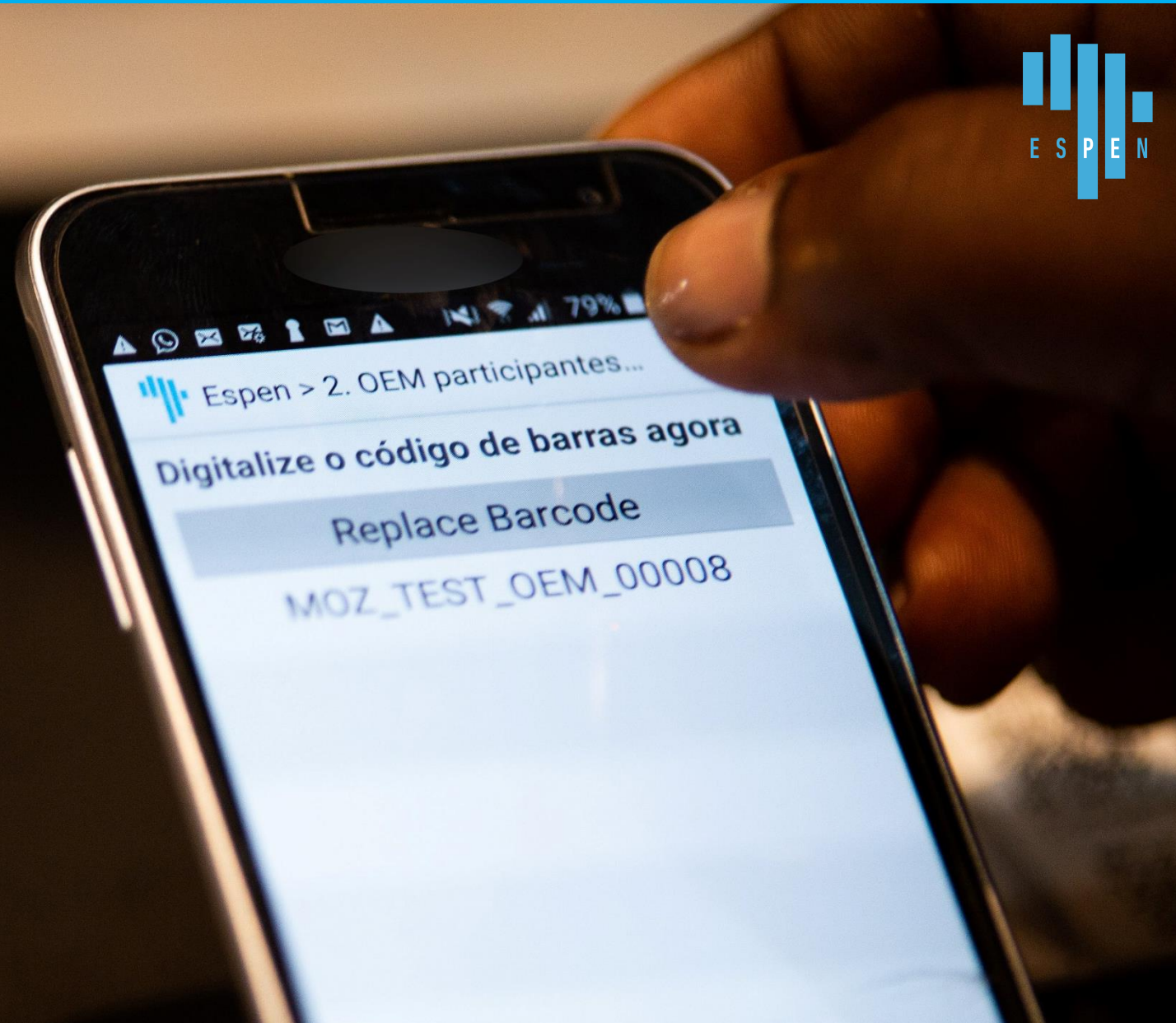
Integration to HMIS

Epidemiological surveys are often excluded from national HMIS system because they are “event data” rather than “routine data”.

For countries that want to store all NTD programmatic data in a central location, they can download the raw data, import the EPIRF data, or use the ESPEN Portal APIs to access data in the ESPEN database.



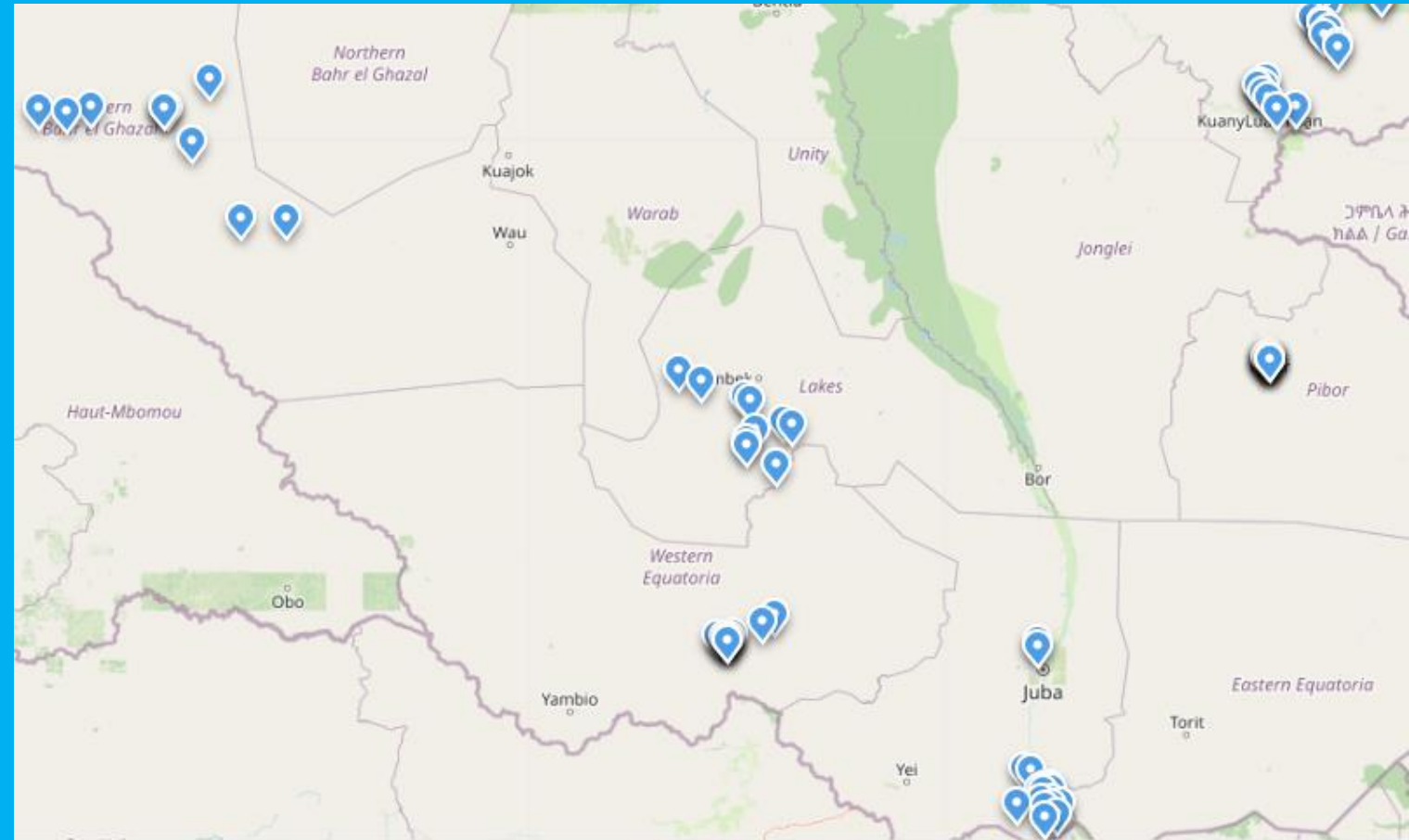
Experiences: Coverage survey in South Sudan and Burkina Faso



Overview of Coverage Survey in South Sudan

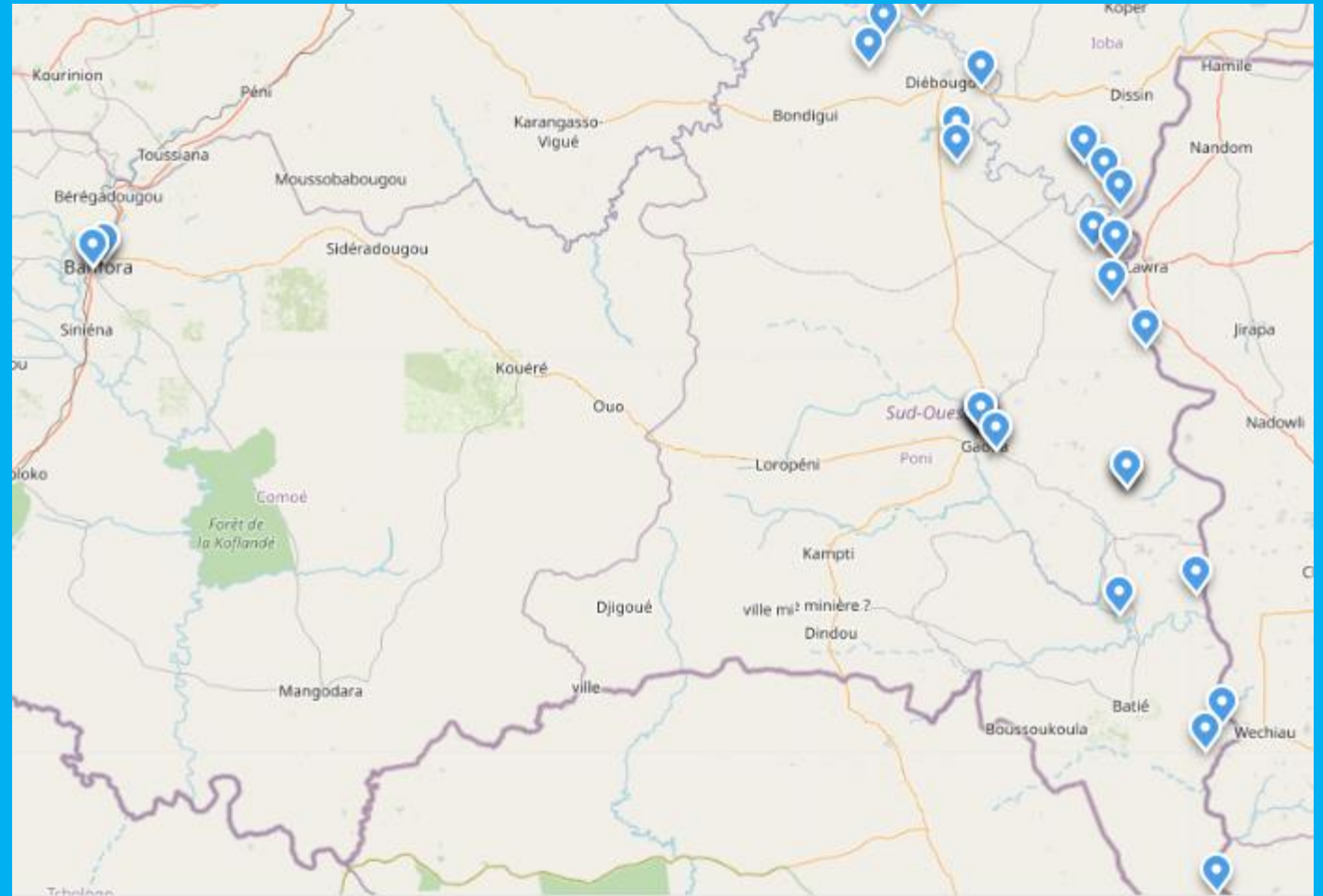
ESPEN

- **Survey Period:** October 1st to November 10th, 2023
- **Training:** About 100 personnel were trained to use ESPEN Collect
- **School Visits:** 258 schools were visited
- **Pupil Survey:** More than 8,000 pupils were surveyed
- **Survey Equipment:** 43 smartphones were used



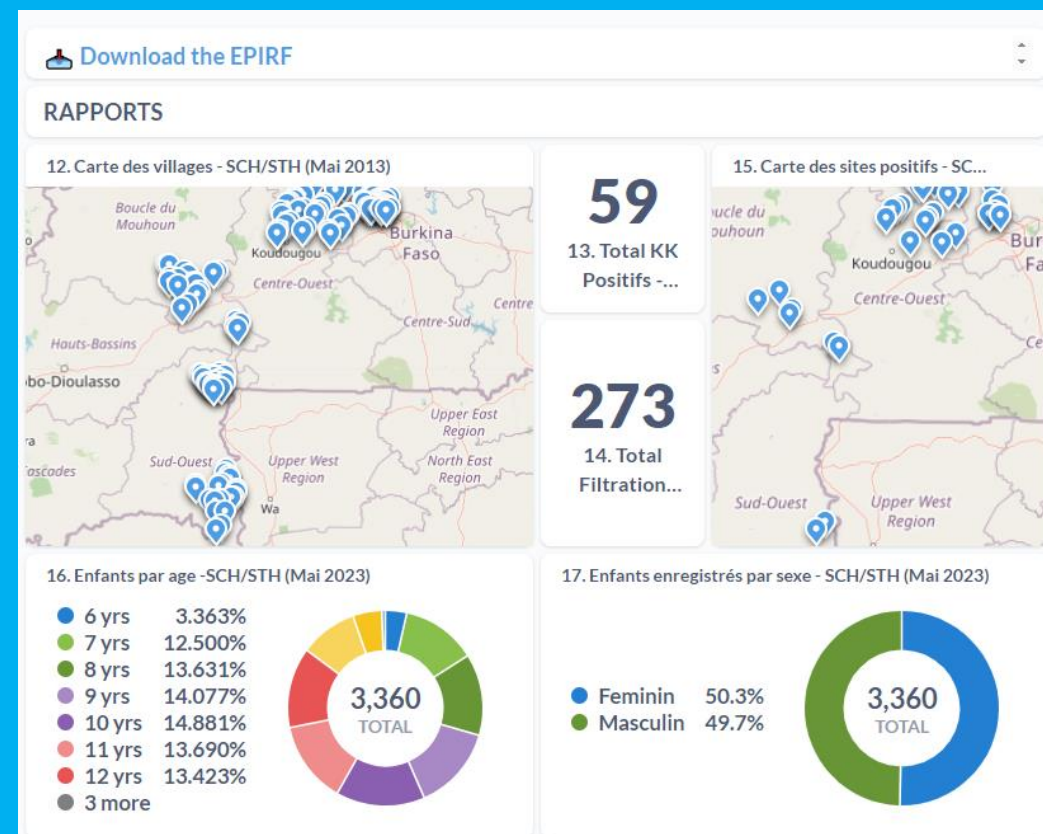
Overview of Coverage Survey in Burkina Faso

- **Survey Period:** December 4th to December 20th, 2023
- **Training:** 20 personnel were trained to use ESPEN Collect
- **School Visits:** 10 schools were visited
- **Pupil Survey:** More than 2,211 pupils were surveyed
- **Survey Equipment:** 3 smartphones were used



Assistance Provided During the Survey:

- Experts examined the protocol to ensure its conformity to WHO recommendations
- **ESPEN Collect Support:**
 - Hands-on assistance with the ESPEN Collect application
 - Conducted remote training sessions
- **Form Development:** three type of electronic forms were created, including a School Form for capturing school details and GPS data, a Participant Form for anonymous data on pupil demographics, and diagnostic form for recording FTS test result or Kato Katz and Urine Results
- **Monitoring with Metabase Dashboard:**
 - Utilized Metabase for real-time survey progress tracking
 - Ensured ongoing assessment of data quality





EPIRF Generation and Validation:

Generated Epidemiological Data Reporting Form (EPIRF) summarizing survey outcomes.
Submitted to the respective countries for validation.



Capacity Building:

Trained 86 individuals in ESPEN Collect, enhancing local capacities.



Post-Treatment Surveillance:

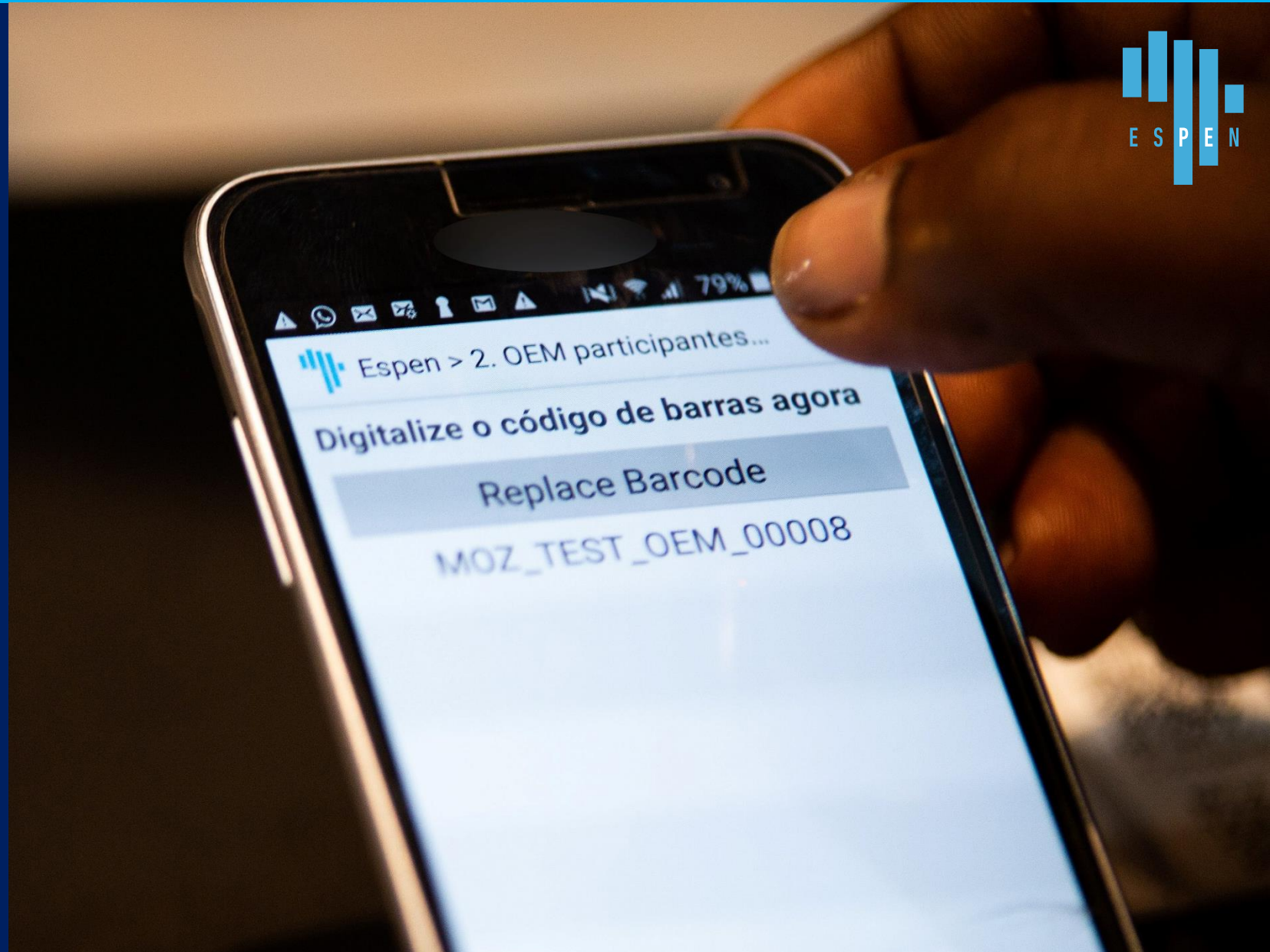
Utilized ESPEN Collect for rigorous post-treatment surveillance.
Covered 7 Implementation Units in Burkina Faso and 11 Implementation in Kenya.



Data Quality Assurance:

Ensured the collected data was meticulously cleaned and of high quality.

Future Enhancements and Services

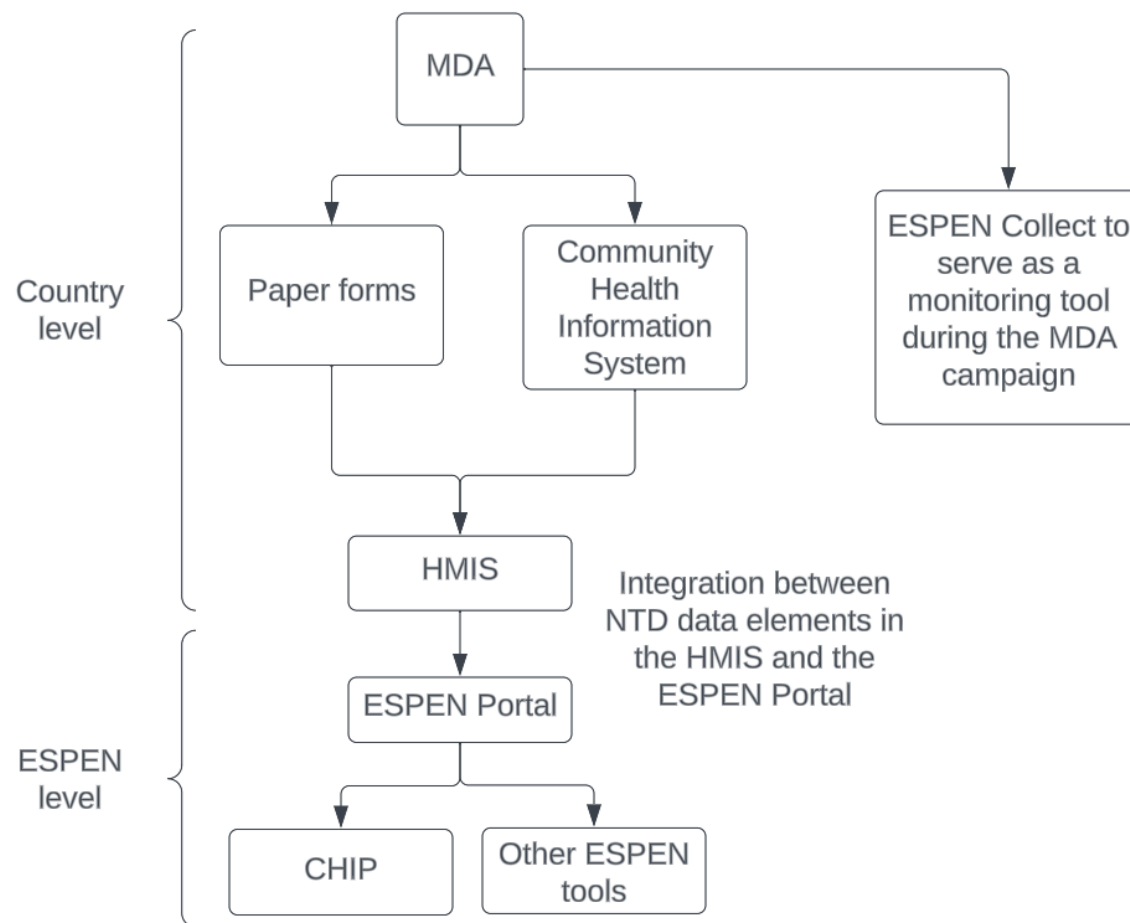


ESPEN Collect's Vision for Enhancements and Services



MDA Campaign Support:

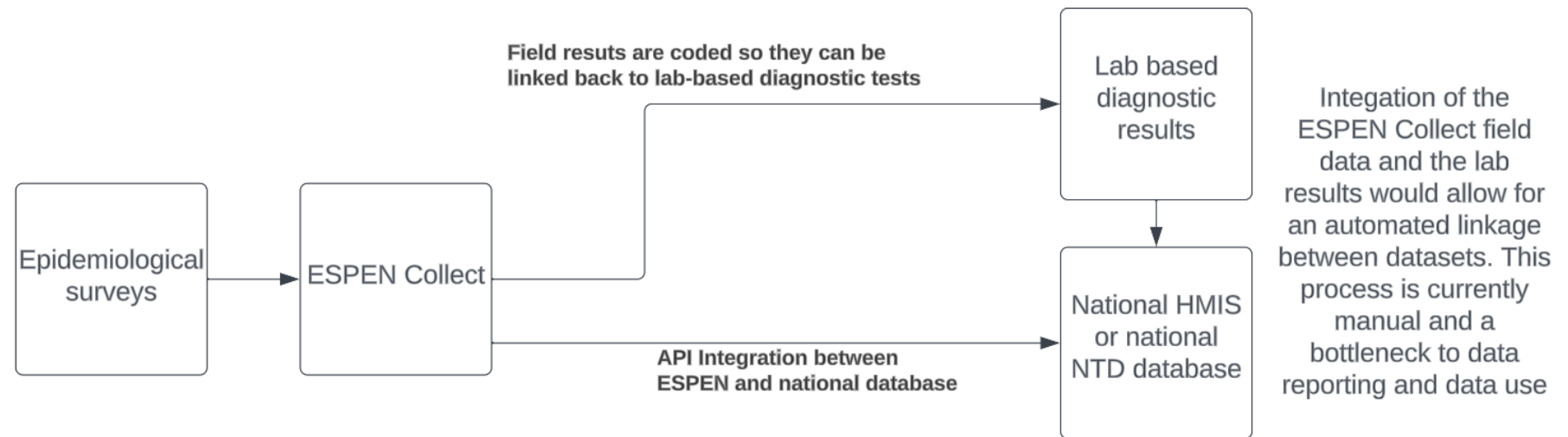
- ESPEN Collect would focus on supporting monitoring of the MDA during implementation
- ESPEN Collect with mobile data collection and online data visualization would be a valuable compliment to the national reporting through HMIS or CHIS



ESPEN Collect would not want to compete with national systems such as HMIS and CHIS. Rather, ESPEN Collect could serve as an earlier warning data reporting and supervision system to support the MOH, Partners, and Donors

Data Integration Standardization:

- Standardize the integration of data collected by ESPEN into national systems, such as HMIS, using the ESPEN Portal APIs
- Integration of survey data into national systems will enhance government ownership and increase efficiency and consistency in data management when linking field results with lab-based diagnostic test results.



Thank you

For more information, please contact:
Dyese YUMBA
ESPEN Collect Project Officer
yumbad@who.int

UHC/UCN

Universal Health Coverage/Communicable
and Noncommunicable Diseases



EXPANDED SPECIAL PROJECT
FOR ELIMINATION OF
NEGLECTED TROPICAL DISEASES

