

DHIS2 – Campaign Demo

Nairobi campaign digitalization
meeting 2024

Sakibou ALASSANI – Systems development Lead |
HISP West & Central Africa
(salassani@hispwca.org)



UiO : HISP Centre
University of Oslo



1



Pre-Campaign

DHIS2 supports microplanning with GIS mapping, population data integration, and mobile apps for household enumeration, improving resource allocation by pinpointing vulnerable populations.

2



Real Time Monitoring

DHIS2 allows real-time monitoring of campaign progress, including delivery, household reach, and stock levels, using offline mobile data collection and automated dashboards for timely interventions and adjustments.

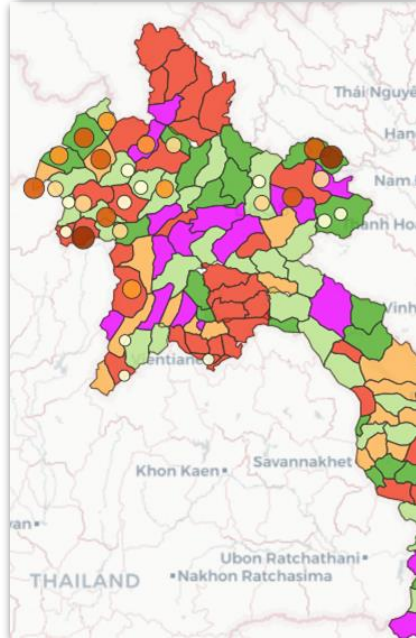
3



Post-Campaign

DHIS2's analytics capabilities aid post-campaign evaluation by triangulating data from various sources, including continuous LLIN distribution and reported malaria cases, to assess coverage and impact effectively.

Comparison between SIA and VCS coverages				
March 2023, April 2023				
	EPI - MR Coverage (%)	SIA-VCS - Coverage (%)	SIA - MR Coverage (%)	SIA-RCM - Coverage (%)
0201 Phongsali	7.4	92	93.2	46.2
0202 Mai	13.6	102	102.5	45.5
0203 Khoua		77.3	77.5	46.2
0204 Samphan	101.5	60.5	60.6	22.2
0205 Bounnua	15.7	110	221.3	62.5
0206 Nyot-ou		100.2	101.8	
0301 Namtha	9.7	98.3	102.3	54.5
0304 Viangphoukha		95.7	105.6	45.5



- Android mobile/offline data capture for LLIN campaign, including geocoordinates.
- Real-time monitoring dashboard for LLIN Campaign, incorporating microplanning and mapping
- Triangulation with routine/HMIS data, showcasing integration of campaign data with DHIS2 HMIS and comparison of data from different sources

Geoenabled Microplanning

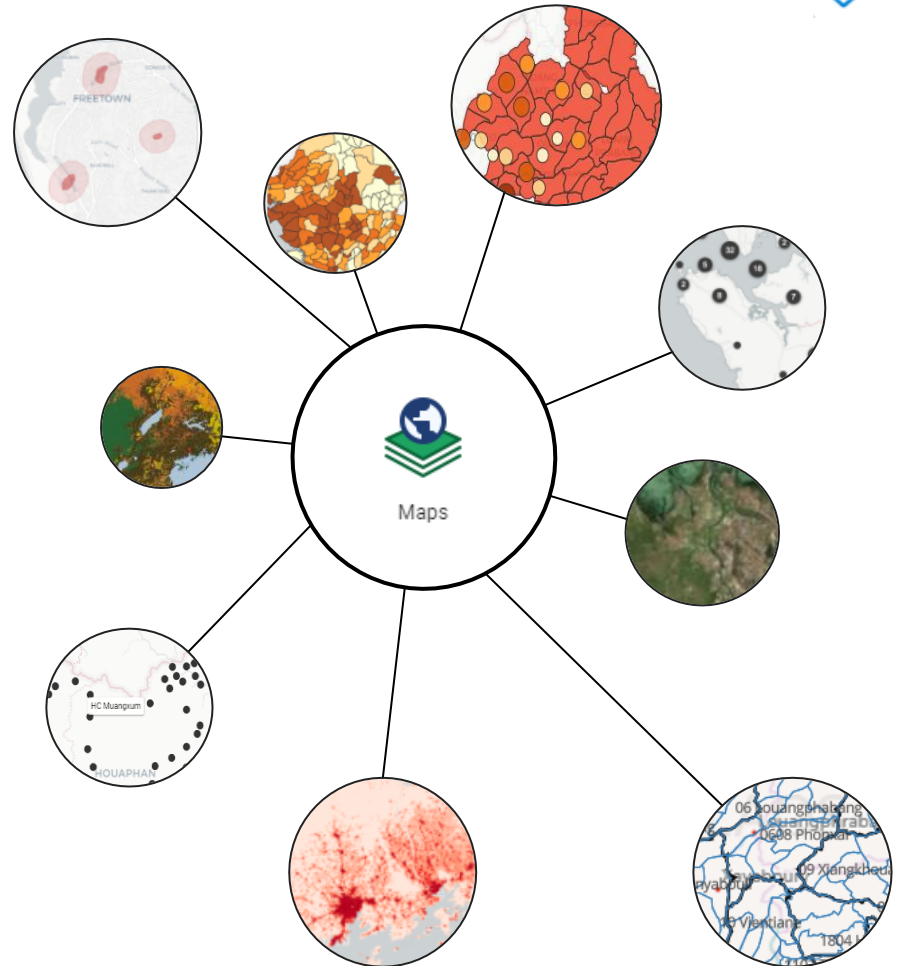
An integrated set of components created to support activities performed during a public health campaign

- **Master plan:** resource estimation, cold-chain logistics, operations, supervision, recording and reporting tools, and monitoring framework

To develop an effective microplan framework there is the need for **detailed geographical data on population estimates**, as well as **healthcare facilities and sites** administering health campaign services

- Inability to find out where the target group is located hinders the chances of achieving the goals of a health campaign

Via the use of spatial data on the location of populations, medical resources, and the area around them in a GIS environment, digital microplanning can ensure that all population groups are present, identify **gaps in equitable reach to care** and optimise outreach plans to **ensure service equity and access**.



Data Collection for microplanning

Data entry

Organizational unit: CMS Agbandi

Dataset: MICROPLAN FS

Period: 2023

Filter sections: Show all sections

QUANTIFICATION ELEMENTS

BUDGETING ELEMENTS

Filter in section	Value
Number of days of FS supervision	12
Population served	11
Household size	4
Number of health facilities	
Number of days of enumeration-distribution	1
Number of cleanings per day per team	2
Number of MID delivery agents per ZDD	
Number of people per FS training session	3
Number of enumeration-distribution teams per ZDD	
Number of trainers per FS level session	
Number of delivery agent training trainers per session	

QUANTIFICATION ELEMENTS

BUDGETING ELEMENTS

Filter in section	Value
Per diem delivery agent/training	5000
Office supplies	500
CU USP level coffee break	500
Training per diems	5000
CU internet package per USP session	10000
Per diem supervisor FS per day	10000
FS supervisor communication package	4500
FS supervisor travel package per day	3000
CU Delivery note	1000
CU warehouse space assessment sheet	150
CU inventory sheet	150



Quantification data, Budgeting



All level microplan reporting



Modes of electronic reporting - web based. Android app



Data capture by end users

Offline

- Household List
- Search a specific household by typing text or scan Qr code
- Counting – Distribution data entry
- Geocodes of household
- Errors, warning for form Control
- Synchronization to server Scheduled or manual
- Aggregate or event form for stock management

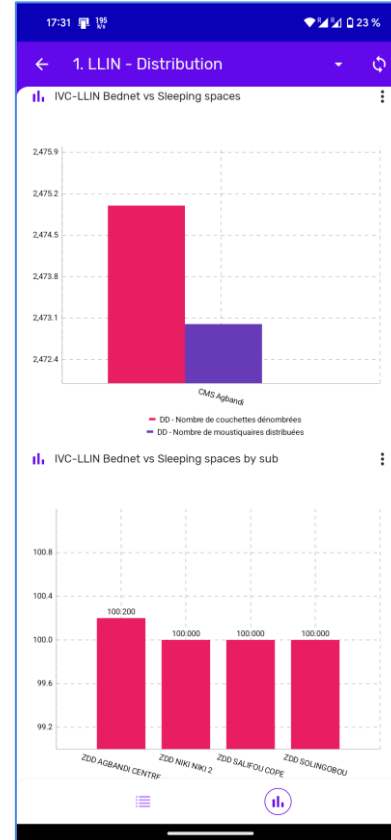
Real time analytics on phone

Offline

Web Offline dashboard on mobile phones.

All dashboards can be visualized on mobile phones through any web browser. (chrome, safari, etc).

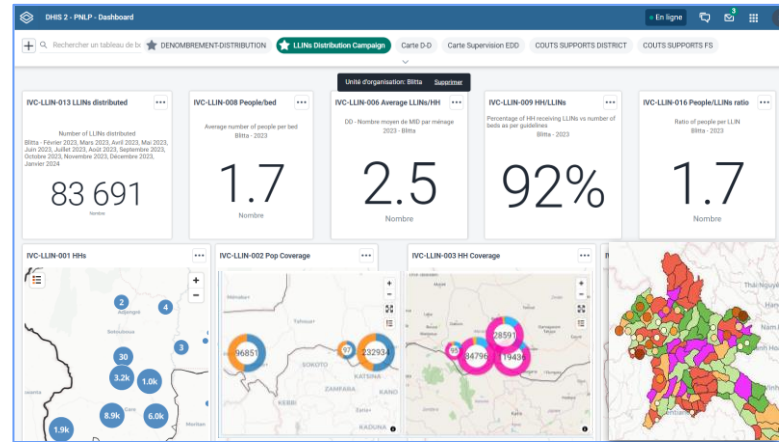
Dashboard can be downloaded to the device and viewable while offline.



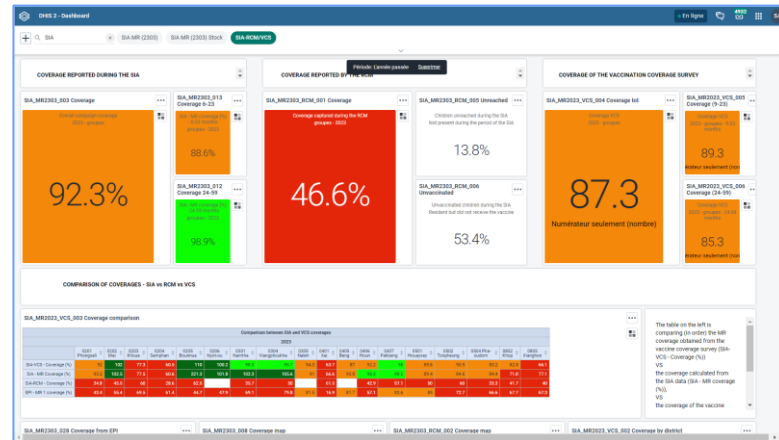
DHIS2 Android app analytics


Dashboards

Dashboard for LLIN Campaign, incorporating microplanning and mapping



Triangulation with routine/HMIS data, showcasing integration of campaign data with DHIS2 HMIS and comparison of data from different sources





Role/Person

assign one single role per position/person, or a fixed set of roles per position




Regulations

align the configuration of the Campaign meta in the system to the national laws/regulations related to data storage, protection and security in the country



Supervision

valuable tool to maintain a good supervision of health workers and data entry clerks and monitor the quality of performance and data through time.



Data privacy

multiple stakeholders may have access to digitised data

THANKS!

info@hispwca.org



UiO : **HISP Centre**
University of Oslo